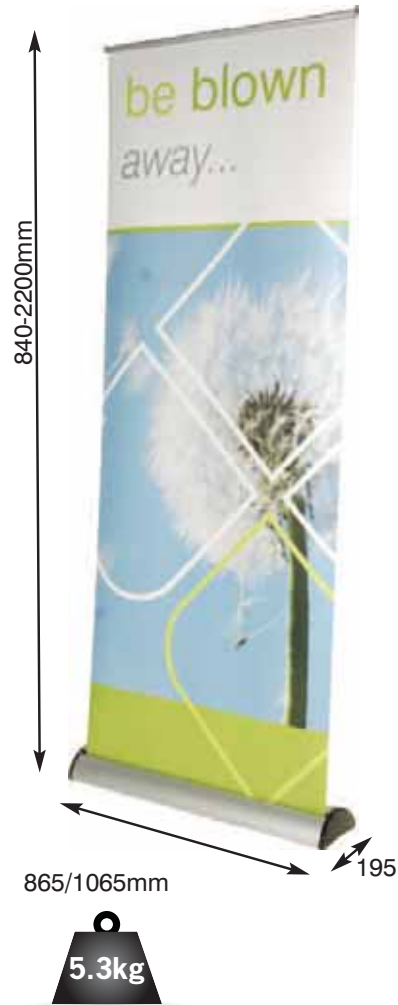


BARRACUDA

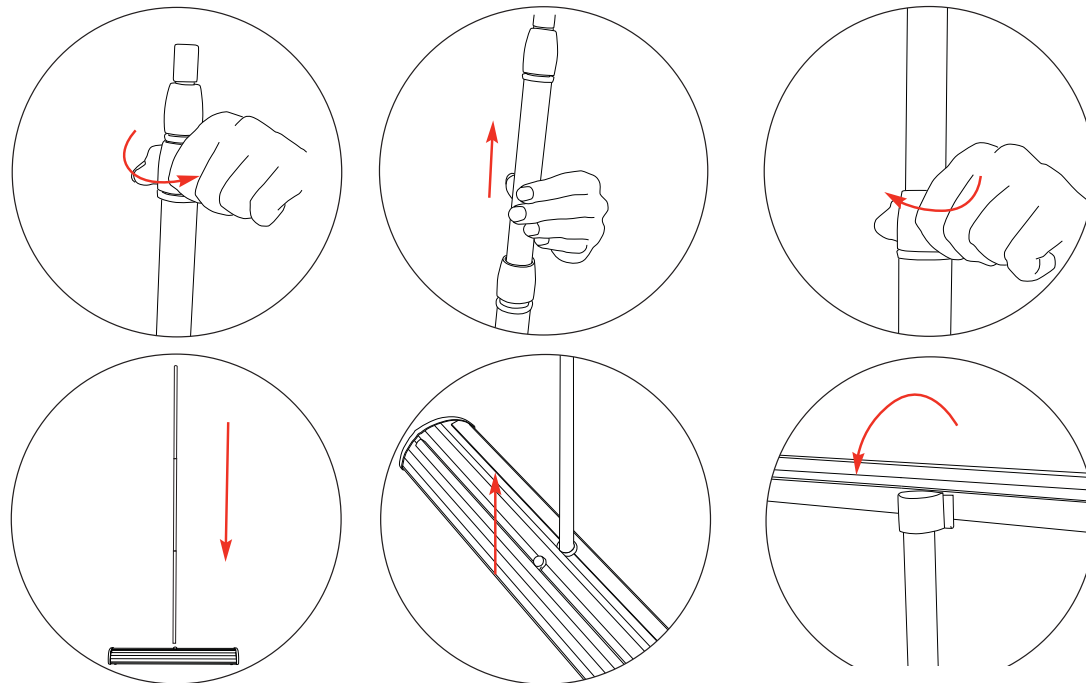


Based on 800mm unit

Recommended Graphic Thickness: 225-450microns
Total Visual Graphic Area: 800x2130mm
Total Visual Graphic Area: 1000x2130mm

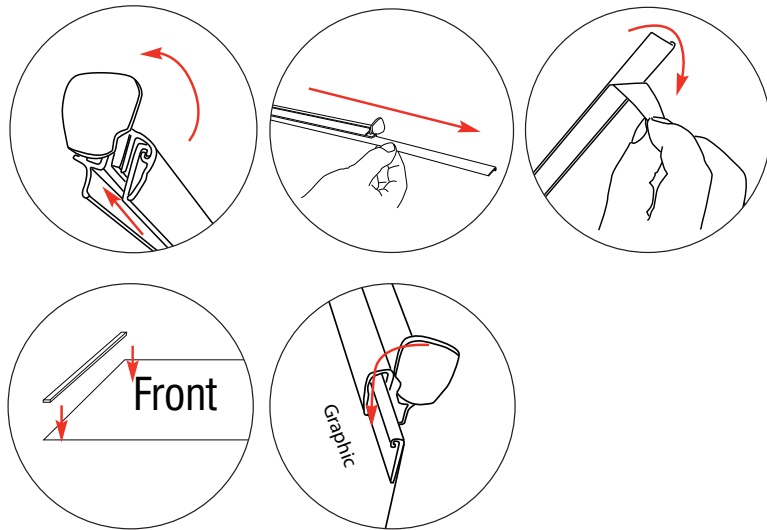
Include a 150mm at the bottom (non-visible area in roller mechanism)

Assembly

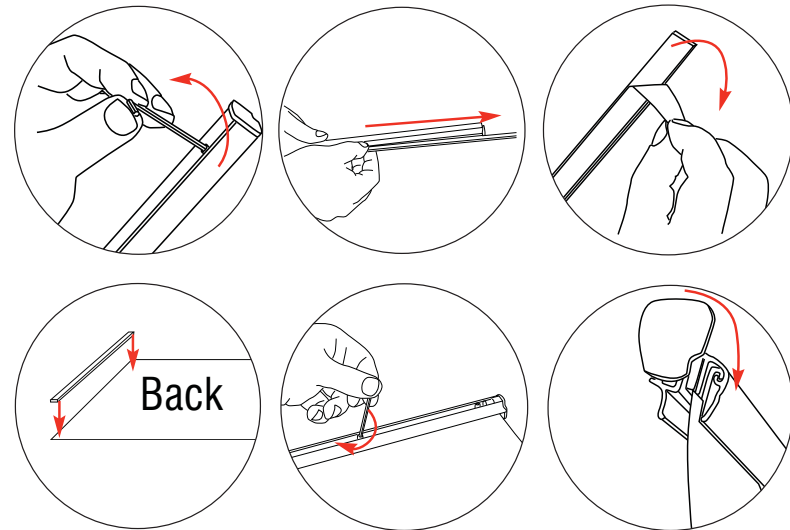


Top Rail Attachment

Option 1 (Adhesive Rail Option)



Option 2 (Clamp Rail Option)



Bottom Graphic Attachment

